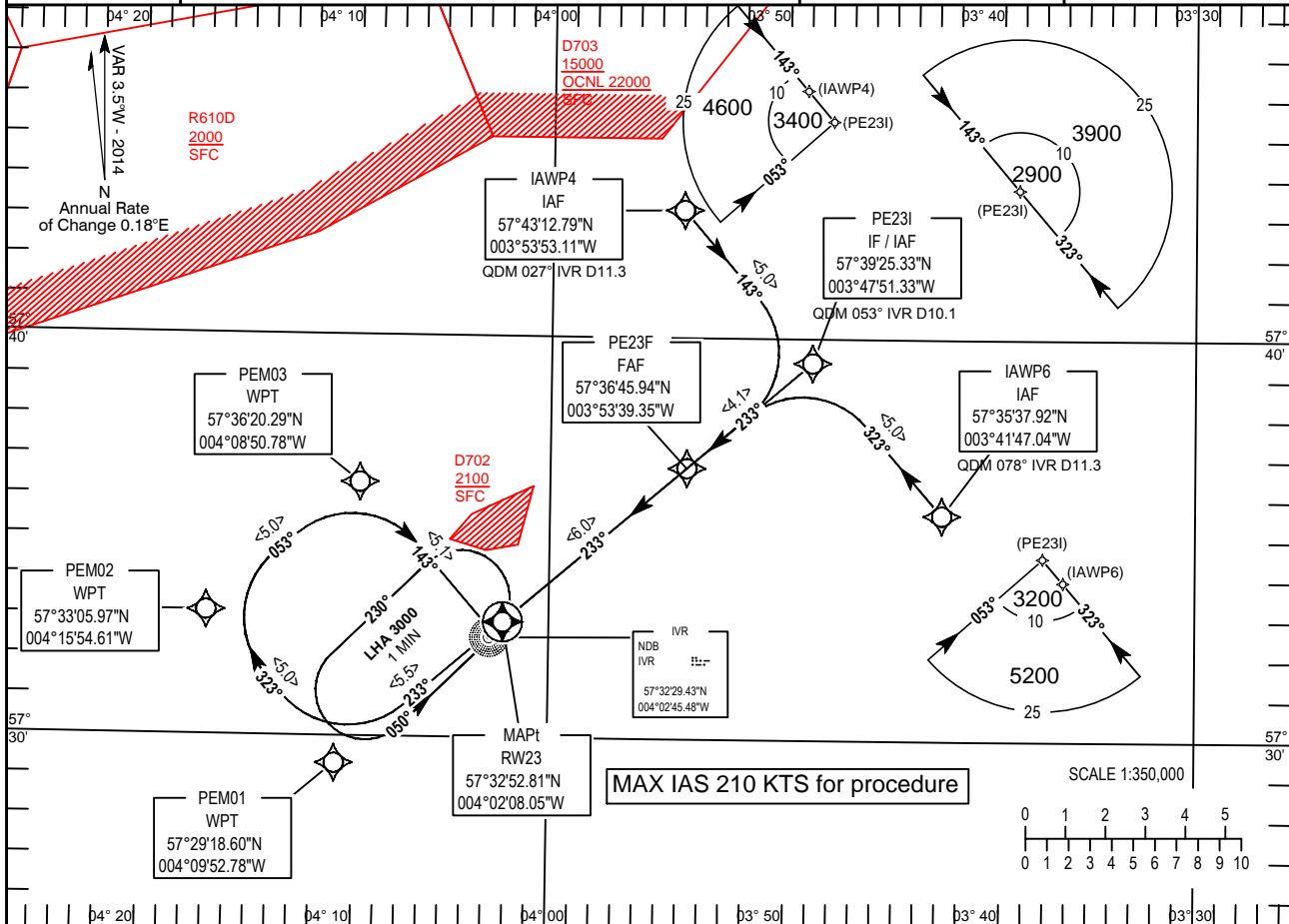


INSTRUMENT APPROACH CHART - ICAO

INVERNESS
RNAV (GNSS)
RWY 23
 (ACFT CAT A,B,C)

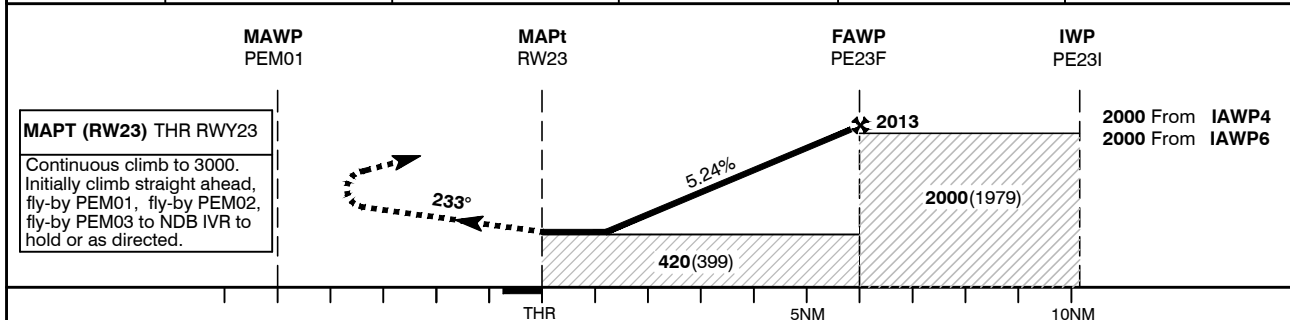
APP	122.600	INVERNESS APPROACH	AD ELEVATION	31
TWR	118.400, 122.600	INVERNESS TOWER	THR ELEVATION	21
RAD	122.600	INVERNESS RADAR		
ATIS	109.200	INVERNESS INFORMATION		
			BEARINGS ARE MAGNETIC	

MIN TEMP -5°C
 EGNOS CH 54101



RECOMMENDED PROFILE Gradient 5.24%, 3°, 320FT/NM

THR23	5	4	3	2	1
ALT(HGT)	1690(1669)	1360(1339)	1040(1019)	720(699)	390(369)



MAPt (RW23) THR RWY23
 Continuous climb to 3000. Initially climb straight ahead, fly-by PEM01, fly-by PEM02, fly-by PEM03 to NDB IVR to hold or as directed.

Aircraft Category		A	B	C
OCA (OCH)	LPV 2.5% MACG	490(469)	500(479)	510(489)
	LPV 3.0% MACG	321(300)	321(300)	321(300)
	LNAV 2.5% MACG	550(529)		
	LNAV 3.0% MACG	420(399)		
VM(C)OCA (OCH AAL)	Total Area	780(749)	910(879)	1430(1399)
	North of RWY 05/23	560(529)	560(529)	1140(1109)

NOTE 1 Missed approach procedure uses **conventional navigation aid** and is not available without **NDB IVR**
2 Pilots should take account of the climb performance of their aircraft to arrange their flight to reach **NDB IVR** at 3000

CHANGE: NEW CHART

CHART VERSION V1