

Community Engagement Campbeltown Runway 11/29 Project

Date : 15th July 2021

Presented by John Lamont



Agenda

7.00pm – Introduction

7.05pm - Why HIAL Requires to Resurface the runway

7.10pm - Overview of the Runway Works

7.20pm - Why are we closing the Airport

7.25pm - Project Program

7.30pm - Open Discussion

1. Why is the Runway being Resurfaced

Runway 11/29 is showing :

- multiple cracking defects
 - loss of surfacing of the slurry seal
 - delamination of surface
 - end of life (slurry coat in 2012)
-

Concrete Undershoot is showing :

- showing loss of joint seal integrity
 - ingress of vegetation extending cracks
-



Increased Risks



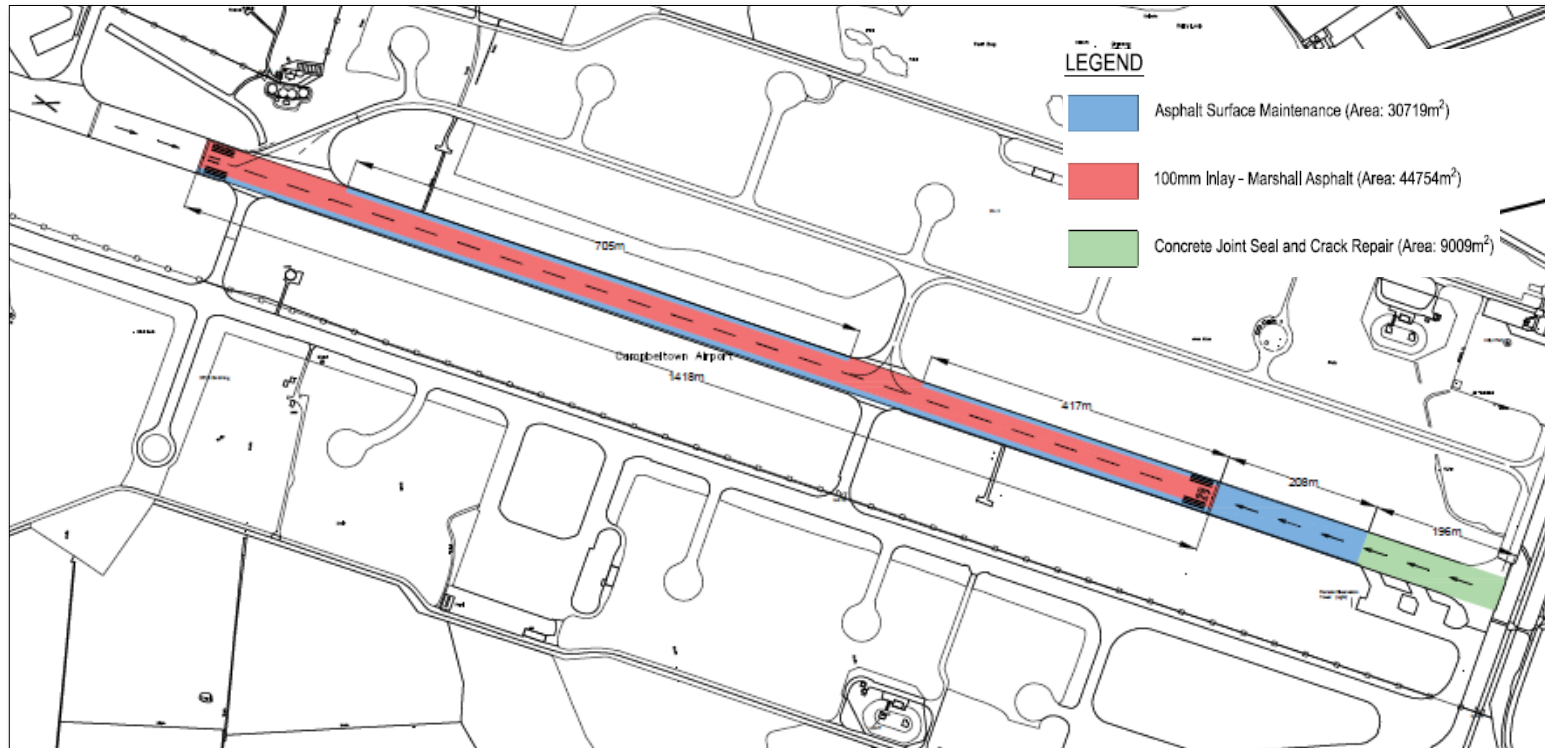
- FOD
- Safety of aircrafts
- Safety to operators

Solution



- Resurface runway
- 15 year design life

2. New runway Length and Width



Runway width – 30m

- Reduced from 46m to 30m
- To suit SAAB 340A and ATR42

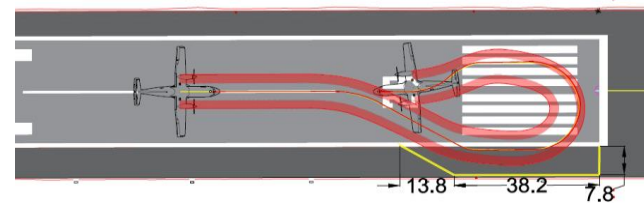
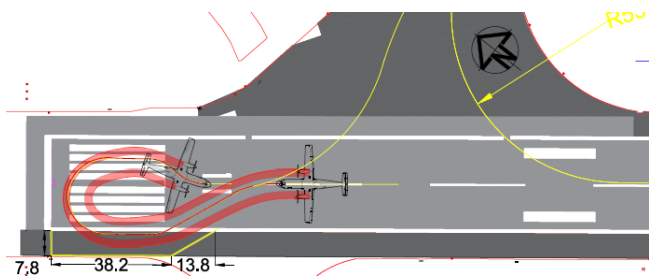
Runway Length – 1412m

RUNWAY DESIGNATOR	TORA (m)	TODA (m)	ASDA (m)	LDA (m)
11	1750	1750	1750	1500
29	1750	1750	1750	1500

TORA = TAKE - OFF RUN AVAILABLE
 TODA = TAKE - OFF DISTANCE AVAILABLE
 ASDA = ACCELERATE - STOP DISTANCE AVAILABLE
 LDA = LANDING DISTANCE AVAILABLE

RUNWAY DESIGNATOR	TORA (m)	TODA (m)	ASDA (m)	LDA (m)
11	1412	1412	1412	1412
29	1412	1412	1412	1412

TORA = TAKE - OFF RUN AVAILABLE
 TODA = TAKE - OFF DISTANCE AVAILABLE
 ASDA = ACCELERATE - STOP DISTANCE AVAILABLE
 LDA = LANDING DISTANCE AVAILABLE



Runway width : Accommodate SAAB 340A and ATR42 -500

3. The Runway Works Methodology

1 Contractor Mobilises



1. Mobilise Camp
2. Mobilise plant and material
3. Mobilise key contractor staff

2. Construction Works

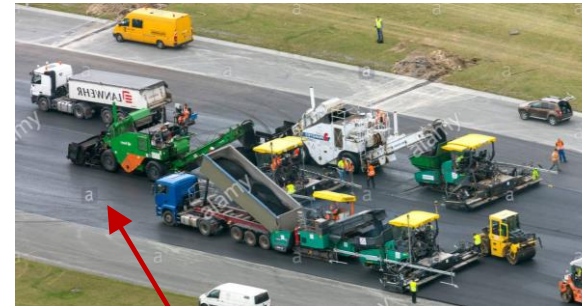
1. Removal of 100mm asphalt



2. Apply asphalt reinforcement



3. Apply 100mm of new asphalt to finished level.



Geo synthetic material

3. Inspection and CAA Approval



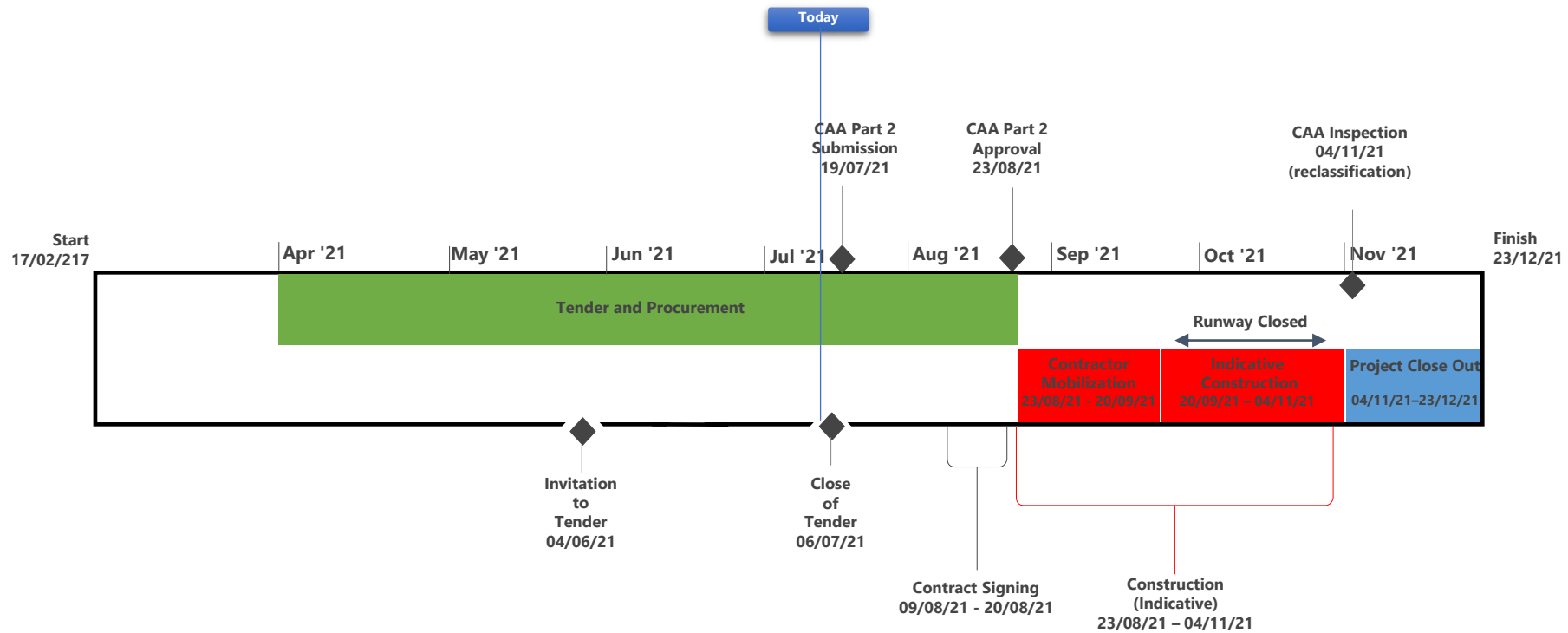
4. Runway Open



4. Reason for Closure

- 1) Main reason is to reduce the risk of impact to the runway operation. If works were to be carried out each night there is a high risk that the runway may not be available for operation the following morning due to all the requirements to meet the EASA standards each time it is returned to operation.
- 2) Runway closure will allow works to be completed within a 6 week period compared to 12 weeks of night works.
- 3) A runway shutdown provides a fixed duration for the Contractor to work and allows flexibility in his programme to ensure the works are completed on time.
- 4) Dayworks reduces night-time noise.
- 5) Dayworks provide the highest level of assurance that all cracking is treated and that the design life of 15 years can be achieved.
- 6) Asphalt plant (1.5hr away) operates during the day only, special arrangements for night work.

5. Project Program



6. Next Steps

- Processes and Procedures to be put in place.
- Follow up session in August 2021 before Contractor commence.